



AMBULANCE PANEL

AMBULANCE PANEL II

The Ambulance Panel II is the new generation of ambulance panels. It is designed for permanent installation and use in road ambulances.

Long experience in this market has resulted in a product that gives the customer a lot of options and flexibility.

Due to the design and functions there are a big range of variants available. The functions and variants can be combined upon customer's request.

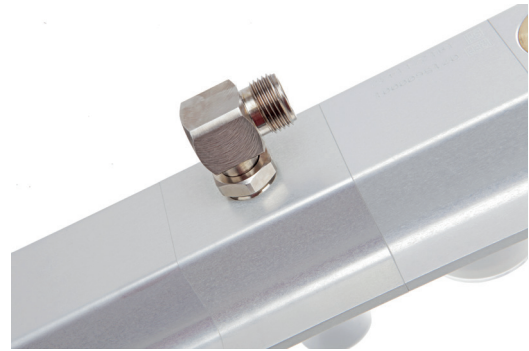
The modular concept means that same components can be used for many variants, resulting in short lead times and full flexibility. The Ambulance Panel II is designed with same Shape for recessed and exposed.



AMBULANCE PANEL II



Gauge



Outlet



Manual switch-over



Quick Couplings

TECHNICAL INFORMATION ABOUT AMBULANCE PANEL II



Recessed



Exposed



Inlet



Quick Couplings



Outlet



Manual switch-over



Gauge



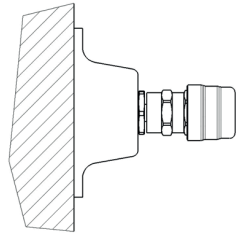
Flow selector



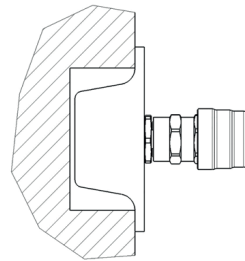
Suction

RECESSED

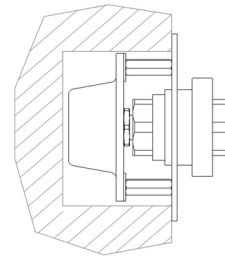
Recessed mounting is when the ambulance panel is mounted in the wall. The inlet could either be mounted at the end or at the back depending on the wall construction and the space behind the wall. The only part that will be outside the wall is the quick connector.



Sketch of exposed mounted panel



Sketch of recessed mounted panel



Sketch of double recessed mounted panel

EXPOSED

Exposed mounting is when the ambulance panel is mounted on the wall in the ambulance. The inlet could as the recessed, also be located at the end or at the back. When using the end inlet the hoses are fastened on the wall and fully visible. For some countries and regulations this is a must and the Ambulance Panel II has the features complying to these requests. The panel is fastened easily by 4 screws. Depending on the wall construction the fastening could either be done by a counter fastening frame or nuts and washers.

INLET

The inlet connection of the Ambulance Panel II is standard 3/8 thread. This is a standard thread with conical sealing that has been used many times in this kind of application. A threaded connection makes the assembly easier and the parts easy to maintain and exchange.

QUICK COUPLINGS

There are many variants of quick couplings on the Ambulance Panel II. The most frequent standards are used on the Ambulance Panel II. For special quick couplings please contact GCE. By using standard components and quick couplings the assembly is easy and the maintenance accessible and effective.

OUTLET

The outlet is standard 3/8 thread connection. If additional panels are needed, the Ambulance Panel II can have extra outlets for panels mounted in series. The panels are then connected with a standard hose and hose connections.

MANUAL SWITCH-OVER

The manual switch-over is a selector that select which cylinder is supplying the ambulance panel. There are three steps 1-0-2, where the 0 is off 1 is cylinder one and 2 cylinder two. The manual switch-over can be incorporated in the panel beside the other quick couplings or it could be mounted separately.

GAUGE

One of the additional functions in the Ambulance Panel II is the gauge on the panel. The gauge displays the working pressure in the system and gives continuously surveillance and is fully visible by the staff in the ambulance.

FLOW SELECTOR

The Ambulance Panel II module can be equipped with a flow selector. The flow selector is permanently attached to the Ambulance Panel II module and can have the flow settings of 0-15 or 0-25 litres per minute. This integrated module gives the Ambulance Panel II a compact design and minimises the protrusion of products from the wall.

SUCTION (only for AIR)

The integrated suction ejector is a variant in the Ambulance Panel II system which gives the end user a complete range of functions. The suction ejector uses the pressure in the system to create suction by the venturi principle. The unit is operated by a simple on/of button and a regulating knob to adjust the negative pressure.

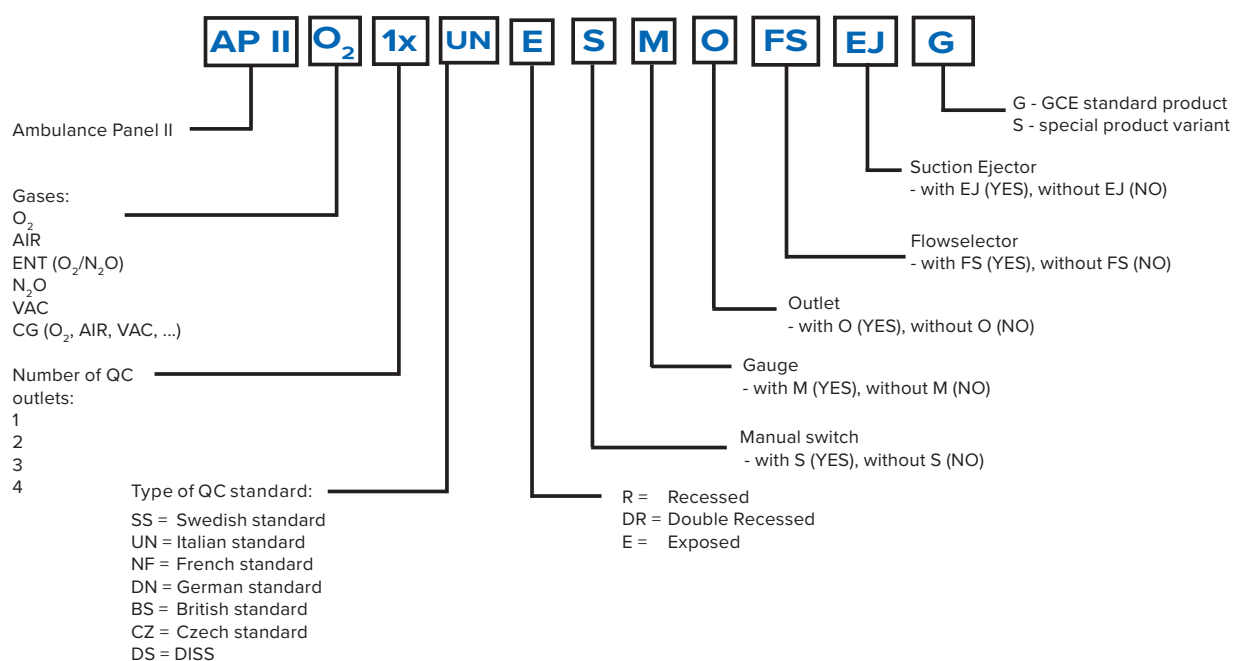
AMBULANCE PANEL SYSTEM (APS)

The complete installation of the ambulance panel, hoses and regulators is called Ambulance Panel System.

TECHNICAL DATA

Capacity QC:	60 l/min
Capacity FLS:	0–15 l/min, 0–25 l/min
Connection:	G3/8"
Weight:	example AP II O ₂ 2xSS R: 754g
QC standards:	SS, DIN, NF, BS, UNI, CZ
Gases:	O ₂ , Air, N ₂ O/O ₂ , N ₂ O, VAC
Classification:	Class IIb
Manufacturer:	GCE, s.r.o., Žižkova 381, 583 81 Chotebor, CZ
Regulatory status:	Complies with Medical Devices Directive 93/42/EEC
	Complies with EN 1789:2008
	Production in accordance with EN ISO 9001 and EN ISO 13485

EXPLANATION OF THE ORDERING INFORMATION



EXAMPLE:

AP II O₂ 1x DN R S G

meaning: an ambulance panel II for oxygen, one quick connector, german standard, recessed with switch and gauge.