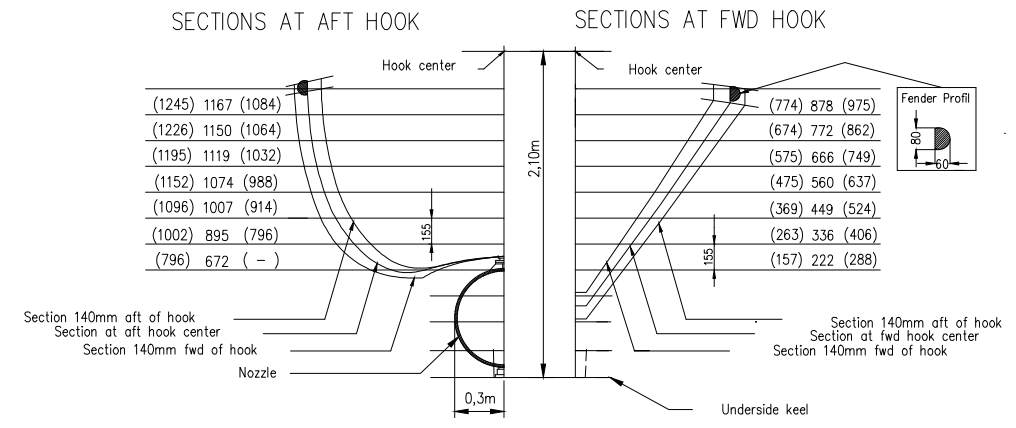


Miriam-85 TELB
MAIN DIMENSIONS:

Length over all (without fender)	8,50m
Length over all (with fender)	8,60m
Beam	3,25m
Total height	3,55m
Hook distance	7,80m
Hook height	2,21m
Capacity max.73 persons	82,5kg/pers.
Weight of boat inc. all equipment	4700 kg
Total davit load	10723 kg

A = Power supply plug approx. 1,6m from aft hook
 B = Winch brake wire approx. 2,2m from aft hook. To be installed at the yard
 Due to manufacturing reasons dimensions may vary up to 50mm



ITEM	QTY	DESCRIPTION	PART NO	DOC.REF	MATERIAL	T. MASS
BILL OF MATERIALS						
0	Issued for construction	ATE	PPE	ATE	19.07.2019	
REV	DESCRIPTION	BY	CHECK	APPRO	DATE	
NORSAFE REVISION HISTORY						
		VIKING Norsafe Life-Saving Equipment Norway AS P.O Box 115 Tel: +47 37 05 85 00 4852 Færvik Fax: +47 37 05 85 01 NORWAY 24/7 Service: +47 37 05 63 33 Email: viking@viking-life.com				
DWG SIZE: A3 SCALE: COPY OF:		PART NO. WEIGHT:		SHEET: 1/1		
CLIENT NO:		PROJECTION METHOD:		External General Arrangement		
TOLERANCES: ISO 2768-mk, ISO 13920-BF		REVISION: 0		Miriam-85 TELB		
DWG No: G-501026		PROJECT:		TOR MK2-S 6T hooks Tanker version		