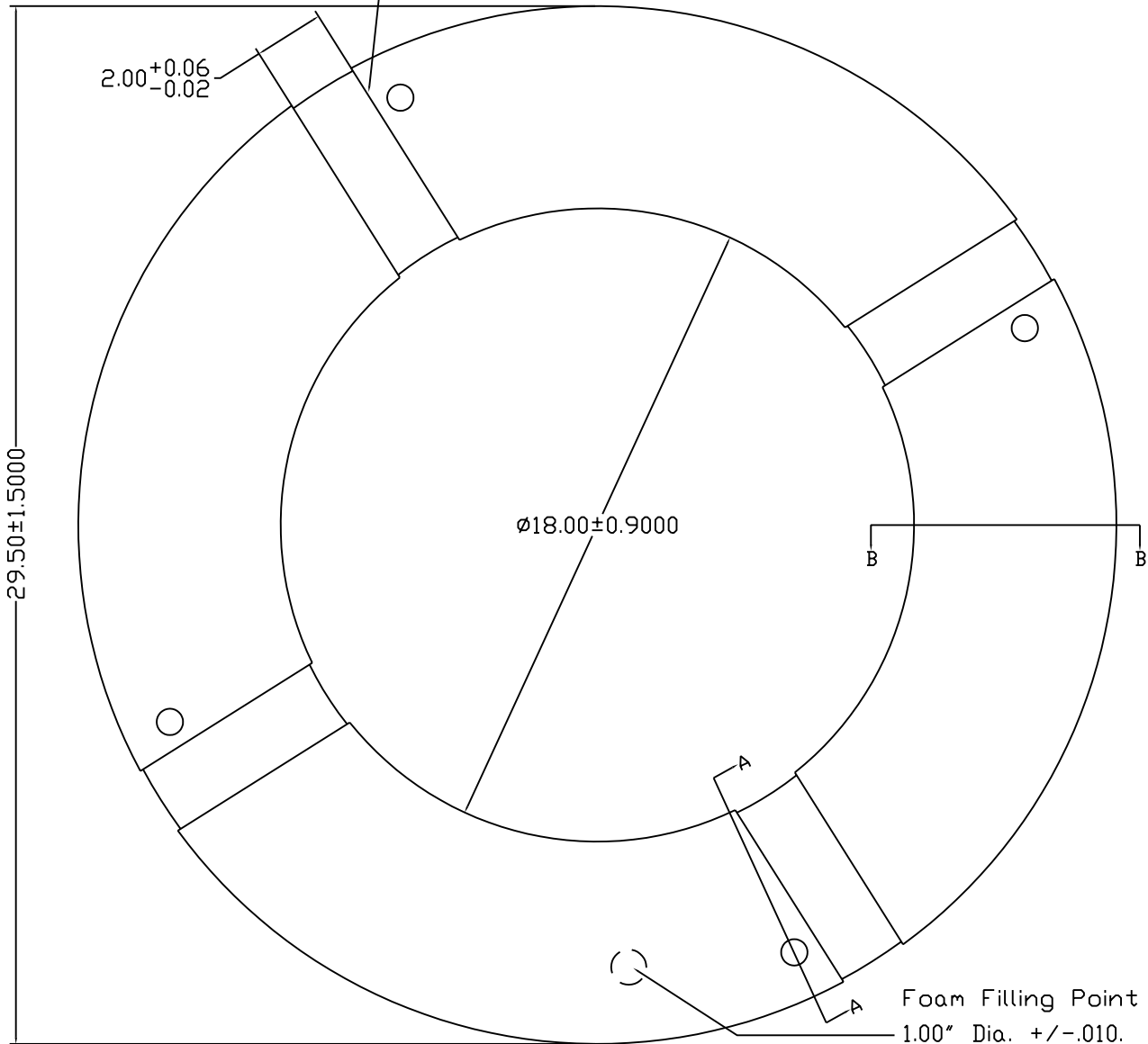
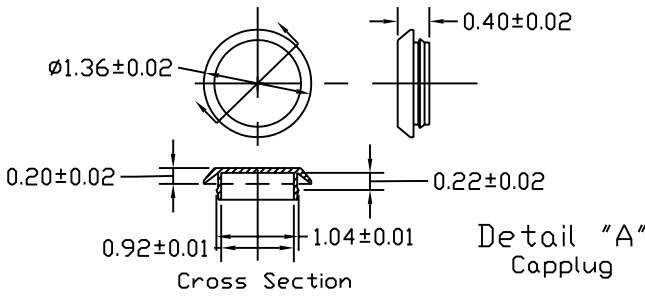


Step Down Relief of approx.
.07" in depth (4 places)



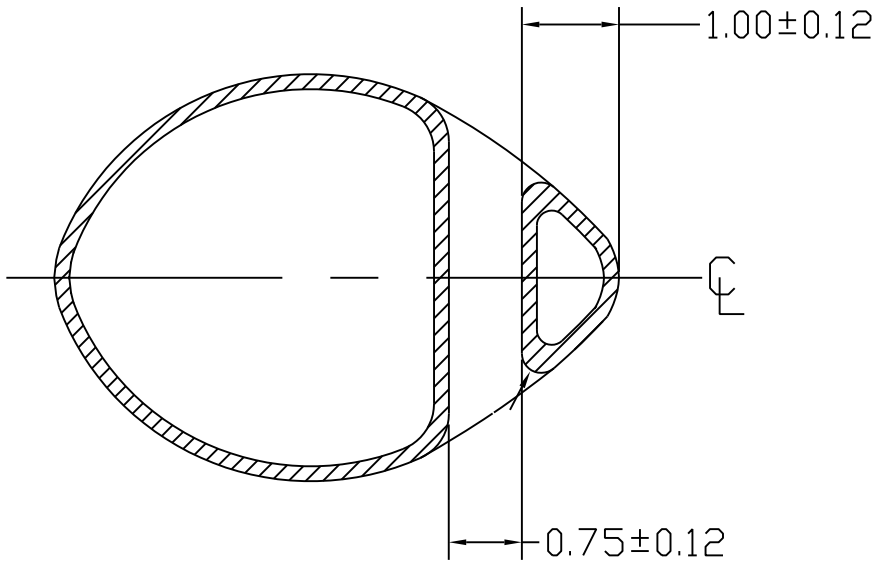
Foam Filling Point
1.00" Dia. +/- .010.
Will be Closed by
Spinweld Process
or with Capplug
(See Detail "A")

- NOTES:
1. Life Ring Buoy Finished Weight Will Be: Min. 5.0 lbs. Max. 7.5 lbs.
 2. Stepdown Reliefs are not required; may or may not be present.

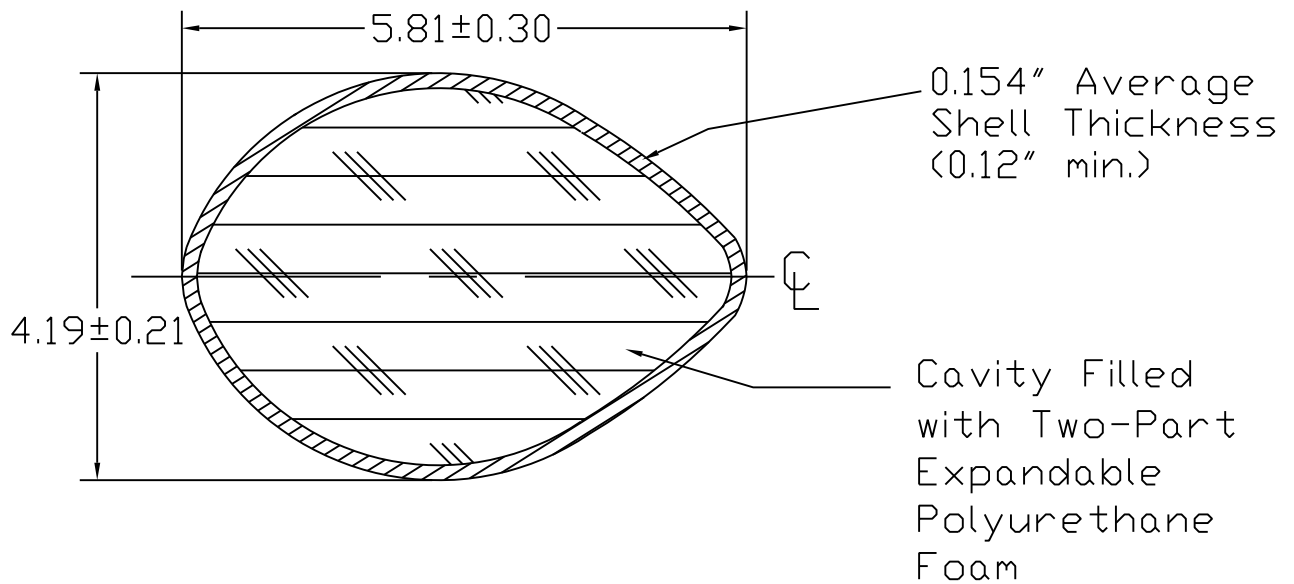


Rev.	Change Description	Date	Drawn By
*		04/13/06	RGM

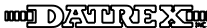
P.O. Box 1150 Kinder LA, 70648		
Date: 04/13/06	Description	
Drawn By: RGM	30 IN. Foamed Buoy	
Reviewed By: HSM	Drawing No. ZY02.5D	
Scale Units NTS Inches:	Sheet 1 of 2	Rev. *



Cross-Section A-A



Cross-Section B-B

P.O. Box 1150  Kinder LA, 70648	
Date: 04/13/06	Description
Drawn By: RGM	30 IN. Foamed Buoy
Reviewed By: HSM	Drawing No. ZY02.5D
Scale Units NTS Inches:	Sheet 2 of 2 Rev. *