

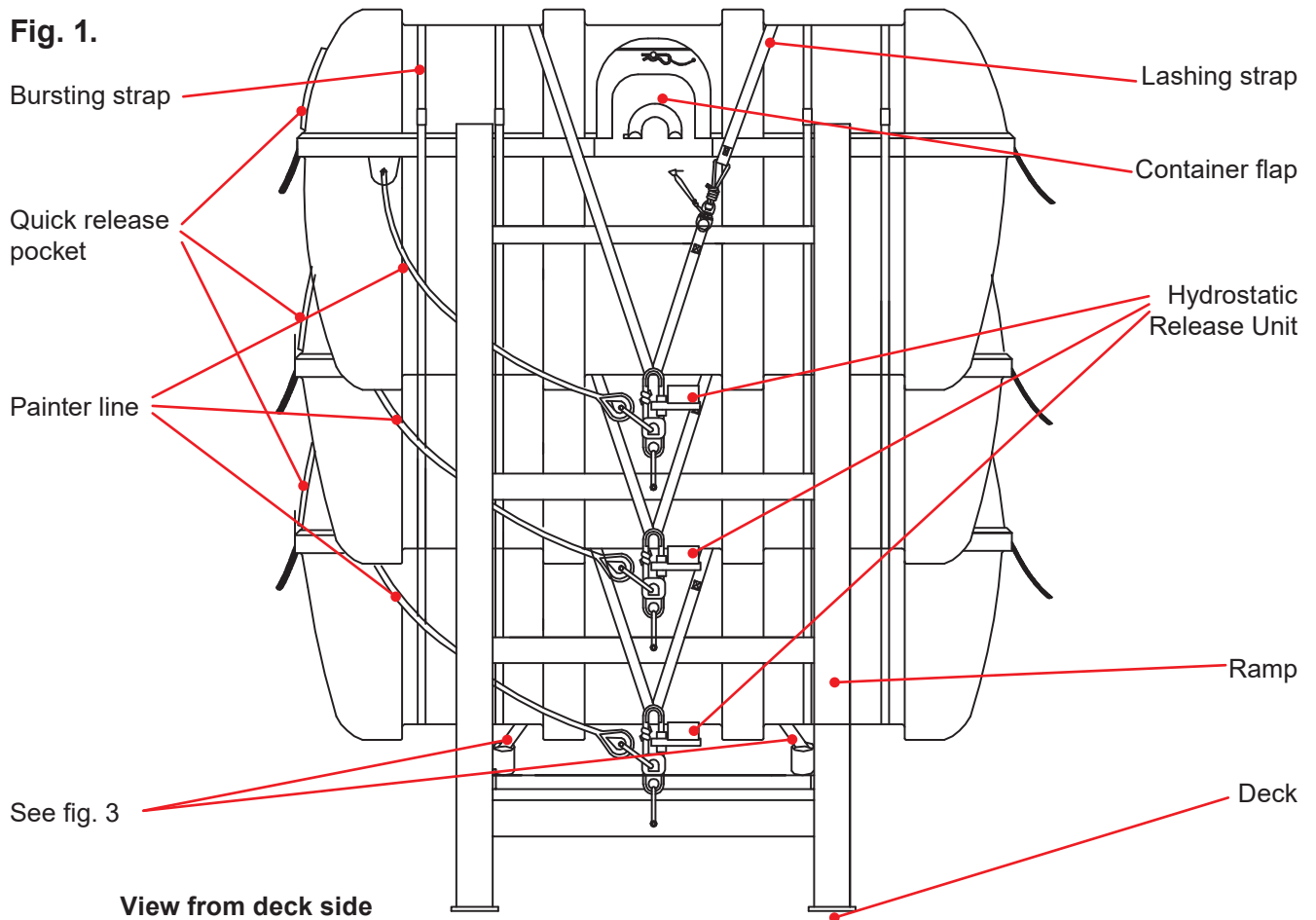
# Mounting instruction for VIKING Ramp

V-MI- 0191



## Mounting instruction for Viking ramp 3x20/25 DKF+ raft

**Fig. 1.**



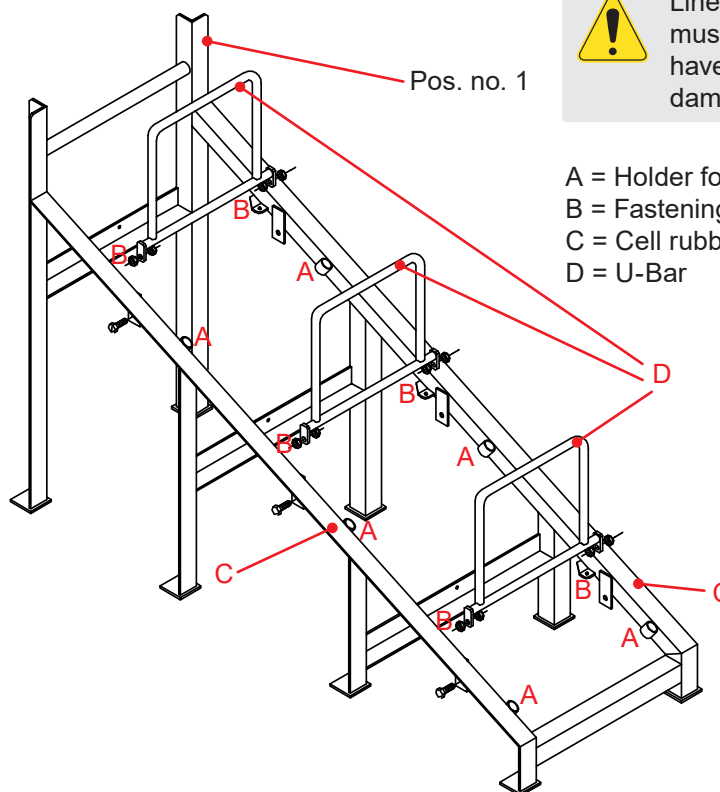
View from deck side

## Mounting of Cell Rubber on Ramp:

**Fig. 2.**

Cut the cell rubber to length C. and fit the cell rubber to rack as illustrated. Start at top of rack at pos no. 1.

Mark: C  
Qty.: 2  
Length: 3000 mm



Lines, cords and lashings must be replaced if they have become frayed, damaged or decomposed.

A = Holder for service pipe  
B = Fastening point for lashing strap  
C = Cell rubber on ramp profile  
D = U-Bar

# Mounting instruction for VIKING Ramp

V-MI- 0191



## Installation instructions:

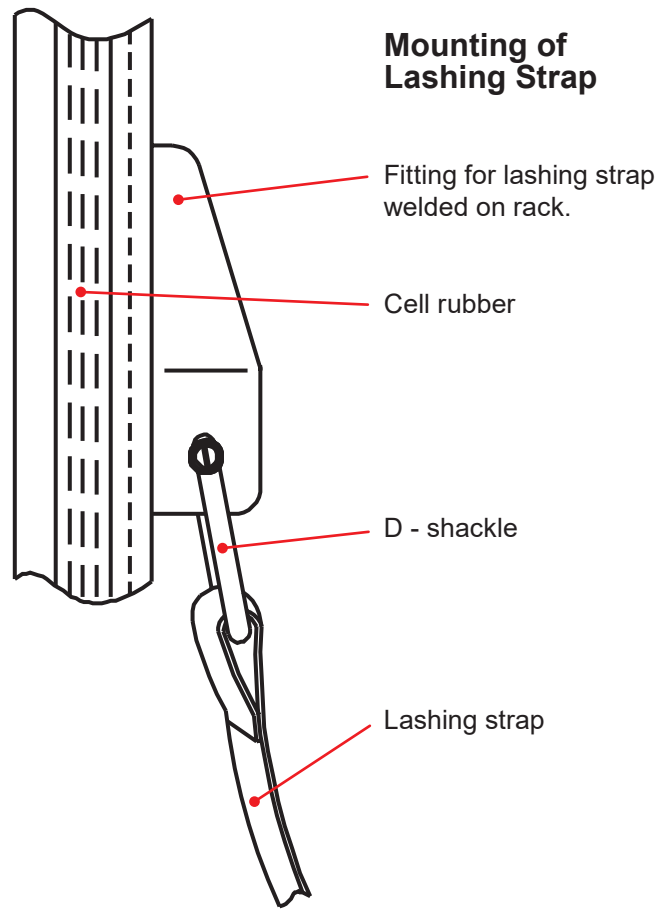
Install the rack on the deck by means of either bolting or welding.

## General guidelines for installation:

Place the container so the raft's painter can be operated from deck side.

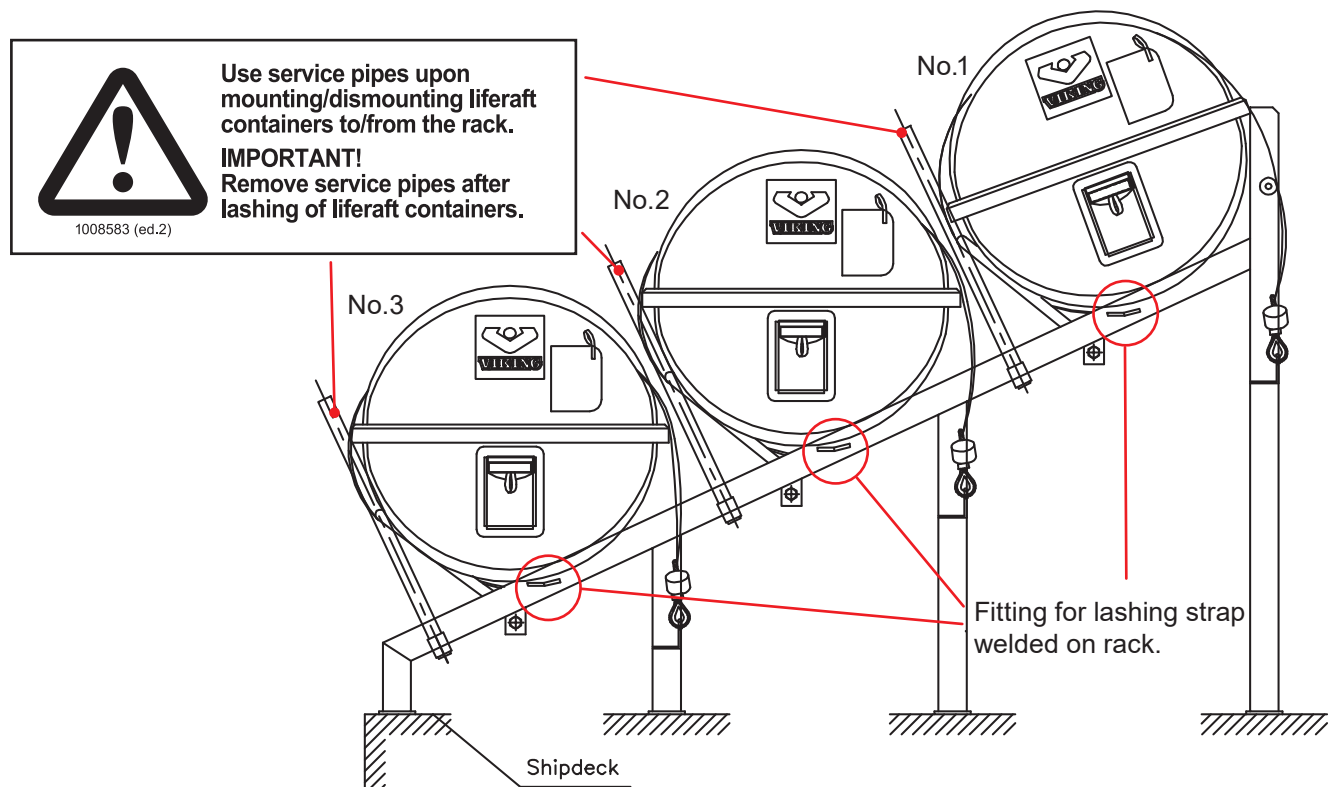
When positioning the container on the ramp, ensure that release of the liferaft is not impeded, i.e. there must be unimpeded access to the liferaft's painter.

1. Place the service pipes in the holders for service pipes
2. Shackle the lashing straps to the fastening points - fig. 3, leading the lashing underneath the supporting frame of the rack.
3. Place the container on the rack resting on the service pipes.
4. Attach the HRU (hydrostatic release unit) to the ramp, following instructions on the last page.
5. Lead the lashing strap over the top of the container so the U-Bar is pressed against the container. Connect the lashing to the HRU following instruction on the last page, be aware lashing not obstruct container flap.
6. Tilt container no. 1 about 15-20° from vertical to avoid top bar of the ramp obstruct the container flap when operating.



## Mounting of Lashing Strap

Fig. 3.



# Mounting instruction for VIKING Ramp

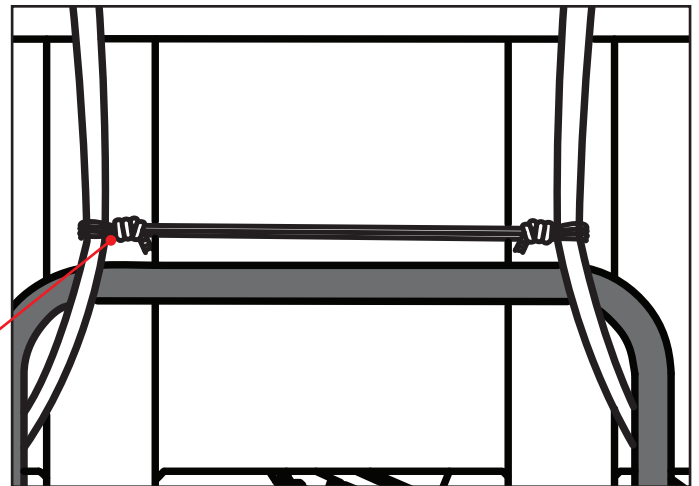
V-MI- 0191



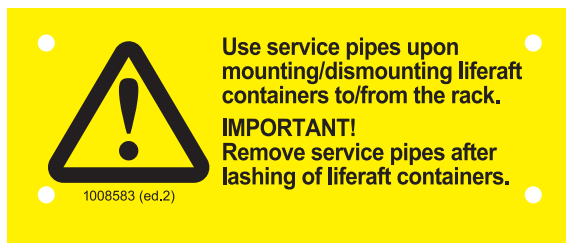
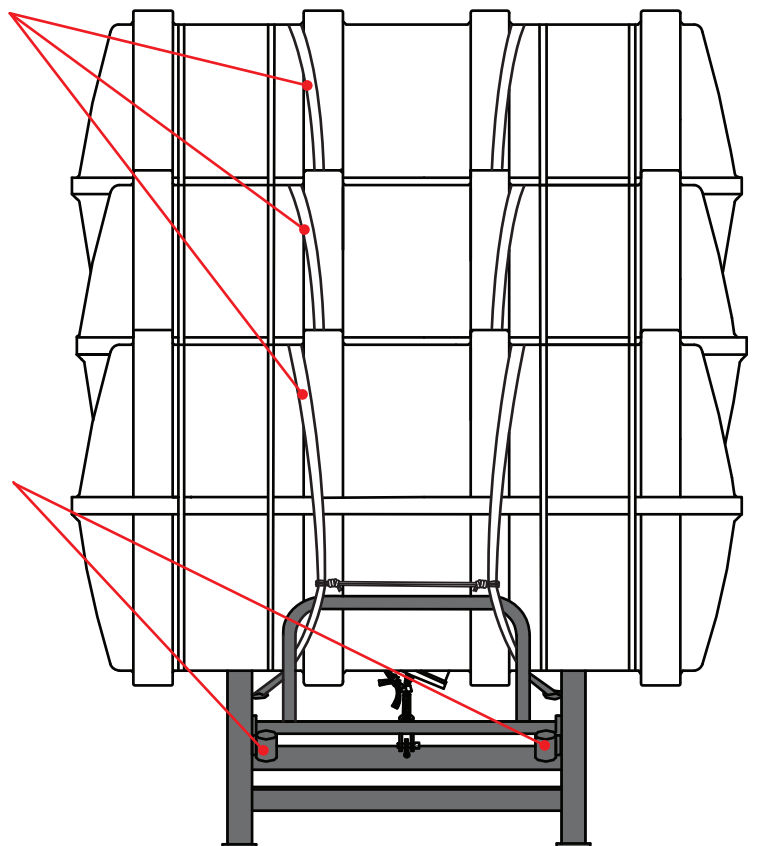
Use 6 mm. line. Fasten it with bow knots and lead the line through both lashings approx. 3-4 times. Finish off with 2 times clove hitches.

Position the lacing above the U-Bar to prevent the lashings from slipping off the container's rib and to avoid obstructing the container flap.

Lacing control lashings position



Lashing lead through U-Bar



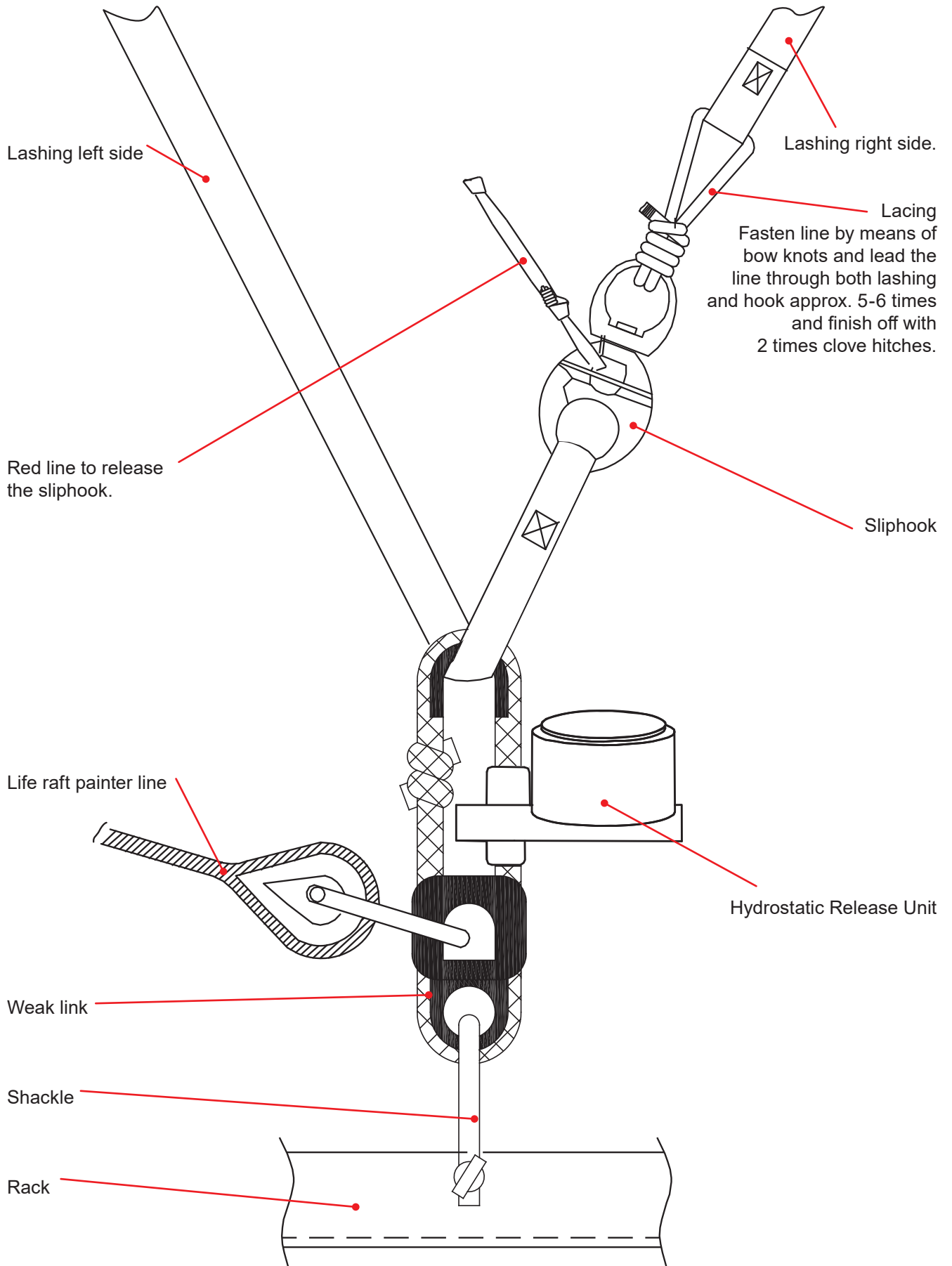
Lines, cords and lashings must be replaced if they have become frayed, damaged or decomposed.

# Mounting instruction for VIKING Ramp

V-MI- 0191



## Mounting Instructions for HRU (Hydrostatic Release Unit) type Hammar.



## Maintenance of Hooks and Lashing

This instruction is to help to control and maintain lashings of liferafts, that are not part of the Marine Evacuation System.

### Lashing

The lashing of liferafts should be tight. Over the years they can start to rot, therefore you might have to change these.

Lashings have an approximate lifetime of 10 years. Lashings produced from 2018 forward are marked with expiration date, making it easier to plan replacement.



Lashing

### Hook

VIKING has two types of hooks, Pelican hooks and Slip hooks.

Both are made of corrosive resistant material, but on rare occasions corrosion may be found.

Both can be maintained by greasing with GREASE OMEGA 66, Material no.1012028 or Anti-corrosion wax based treatment with coating TT-290 material no.1065173. Long-time protection of steel parts. Apply the corrosion protection on the surface with a brush. Wipe off all excessive wax without removing the wax from moving parts.

Ensure to replace when corrosion is observed, or let it be fixed by the servicing station, when liferaft is in for service.

All spare parts can be purchased through the VIKING Servicing Network.



Pelican hook



Slip hook

# Mounting instruction for VIKING Ramp

V-MI- 0191



Sign - Do not pull red line when mounting



This sign must be removed after installation on ship.

