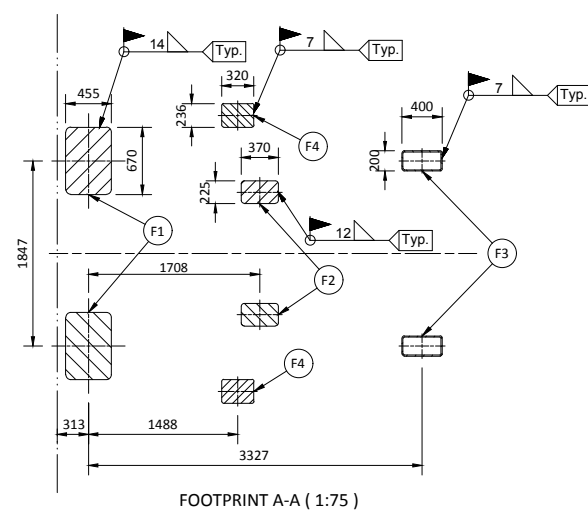


Technical Data NDA-65

SWL: 6500 kg
 Hoisting Speed: Min. 18 m/min
 Lowering Speed: 1m/s ±10%
 Design Spec.: 10° Trim, 20° List Simultaneously
 Davit Weight: Approx. 7800 kg

NOTES:

- Embarkation platforms, ladders etc.: yard supply.
- Location of hydraulic power unit (HPU) and remote control stand to be decided by yard.
- Norsafe deliver 6m hoses for connection between davit and HPU. Hydraulic piping between davit and HPU is yard supply.
- Connection of main power supply to starter cabinet is yard supply.
- All field welds to be performed according to approved WPS (Yard responsibility). All field welding is subject to class approval prior to start welding.
- Reaction forces as joint loads each side, marked with nodes on deck interface. For orientation of forces see legend with marked XYZ vectors. All forces are point loads, nominal forces without any factors.



REACTION FORCES IN DECK (POINT LOAD EACH SIDE)						
	FORCE X (kN)	FORCE Y (kN)	FORCE Z (kN)	MOM X (kNm)	MOM Y (kNm)	MOM Z (kNm)
F1 DAVIT SUPPORT (EACH)	+/-236	175	+/-13	+/-13	+/-3	+/-64
F2 CYLINDER SUPPORT (EACH)	+/-266	+/-183	0	0	0	+/-27
F3 DECK SUPPORT (EACH)	0	61	0	0	0	0
F4 BOAT SUPPORT (EACH)	0	61	0	0	0	0

REV	DESCRIPTION	BY	CHECK	APPROV	DATE
2	Added logo on davit	CENI	GACA	WAGU	07.11.2019
1	Re-issued for approval	GACA	ALJI	WAGU	27.03.2019
0	Issued for approval	GACA	ALJI	WAGU	24.05.2016

VIKING NORSAFE

VIKING Norsafe Life-Saving Equipment Norway AS
 P.O. Box 115 Tel: +47 37 05 85 00
 4852 Færvik Fax: +47 37 05 85 01
 NORWAY 24/7 Service: +47 37 05 63 33
 Email: Viking-Norsafe@viking-life.com

This drawing is the sole property of VIKING Norsafe Life-Saving Equipment Norway AS. It must not be submitted to other parties nor used in any manner detrimental to our interests. It shall not be copied, reproduced, used for manufacturing or sale without the written consent of VIKING Norsafe Life-Saving Equipment Norway AS. All rights are reserved.

DWG SIZE: A3 SCALE: 1:75 COPY OF:
 CLIENT NO: PROJECTION METHOD: NDA-65 RESCUE BOAT DAVIT WITH CRADLE
 TOLERANCES: ISO 2768-mk, ISO 13920-BF REVISION: 2
 DWG No: G-501440 PROJECT: GENERAL ARRANGEMENT

PART NO. WEIGHT: SHEET: 1/1

