

**Model 016-9040 + 016-9041 /
016-9042 + 016-9043 / 016-9044**

Parts required for installation

- A: 4 M10 bolts
- B: 4 M10 nuts
- C: 8 Washers

General guidelines for installation

Place the container so that the liferaft's painter can be operated from the deck (deck side).
When positioning the container on deck, ensure that release of the liferaft is not impeded, i.e. there must be unimpeded access to the liferaft's painter.
If the painter is not fastened to the cradle by means of a shackle at the time of delivery, it must be fastened to a fixed point on the deck (approx. 1 metre away from the container), perhaps by means of one shackle.

As regards installation instructions - please see overleaf.

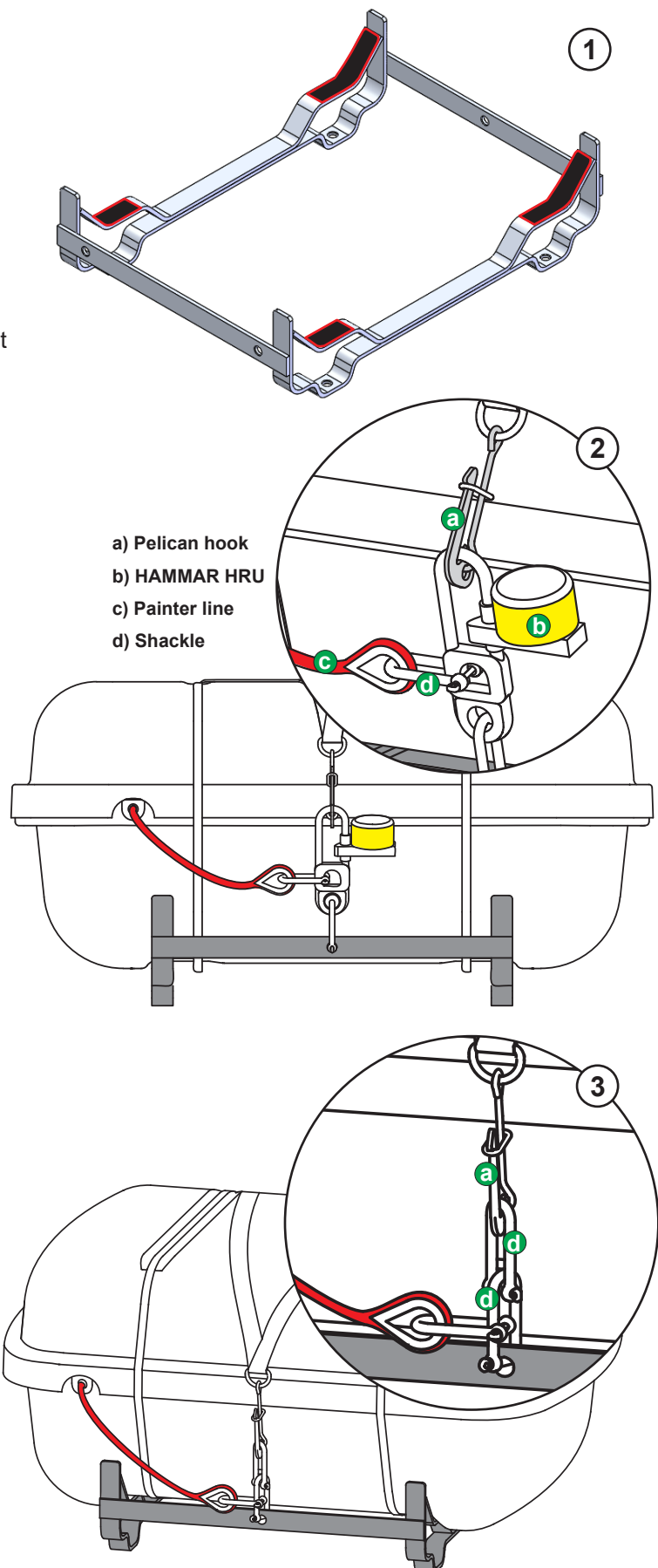
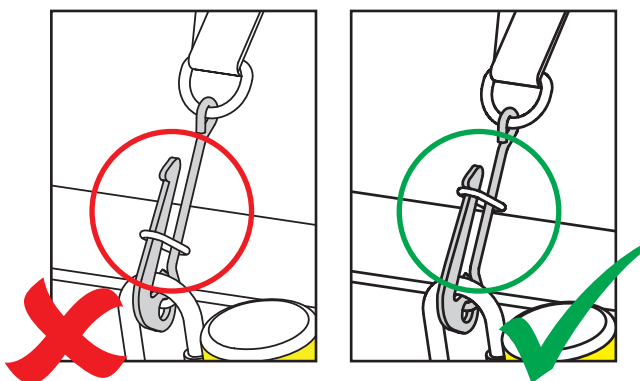
Fig. 1 Cell rubber on all surfaces facing the container.

Fig. 2 Lashing with Pelican hook (with HRU)

Fig. 3 Lashing with Pelican (without HRU)

Note

The ring in the pelican hook must be in the top as shown on the illustration



Installation

Install the container in cradle on the deck by means of either bolting or welding.

Where it is not possible to install the container in cradle right on the deck it can be installed on specially made profiles.

When the place where the container in cradle is to be mounted has been found, the container has to be dismantled from the cradle in order to make room for bolting or welding the cradle to the deck or the special made profiles.

Release the container from the cradle by opening the shackle which is mounted together with a pelican hook in one of the eyes of the cradle.

Dismount the painter by opening the shackle that fixes it to the cradle, - see fig. 3.

Bolt down the cradle as shown in fig. 5.

Upon bolting or welding of the cradle, remount the container in the cradle by mounting the pelican hook in the shackle which is then in turn mounted in the eye of the cradle. Remount the painter on the cradle by means of the shackle. Tighten the lashing strap by means of the adjustment buckle on the lashing strap, if necessary.

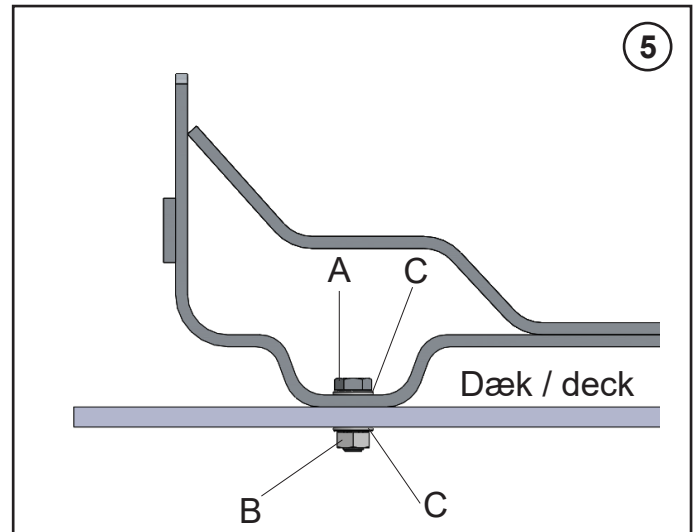
(The container must be mounted on the cradle as shown in fig. 2 and fig. 3).

Bolting

Bolt down the cradle by means of four M10 bolts, nuts and eight washers, - see fig. 5. If the cradle is bolted down, the bolts must be retightened regularly to avoid that the cradle comes loose because of the vibrations of the ship.

Welding

Weld the cradle to the deck with full welds along the edges which are in contact with the deck or the specially made profiles. For a key to the letters used in fig. 5, please see overleaf.



Note

Lines, cords and lashings must be replaced if they have become frayed, damaged or decomposed.

Maintenance of Hooks and Lashing

This instruction is to help to control and maintain lashings of liferafts, that are not part of the Marine Evacuation System.

Lashing

The lashing of liferafts should be tight. Over the years they can start to rot, therefore you might have to change these.

Lashings have an approximate lifetime of 10 years. Lashings produced from 2018 forward are marked with expiration date, making it easier to plan replacement.



Lashing

Hook

VIKING has two types of hooks, Pelican hooks and Slip hooks.

Both are made of corrosive resistant material, but on rare occasions corrosion may be found.

Both can be maintained by greasing with GREASE OMEGA 66, Material no.1012028 or Anti-corrosion wax based treatment with coating TT-290 material no.1065173. Long-time protection of steel parts. Apply the corrosion protection on the surface with a brush. Wipe off all excessive wax without removing the wax from moving parts.

Ensure to replace when corrosion is observed, or let it be fixed by the servicing station, when liferaft is in for service.

All spare parts can be purchased through the VIKING Servicing Network.



Pelican hook



Slip hook