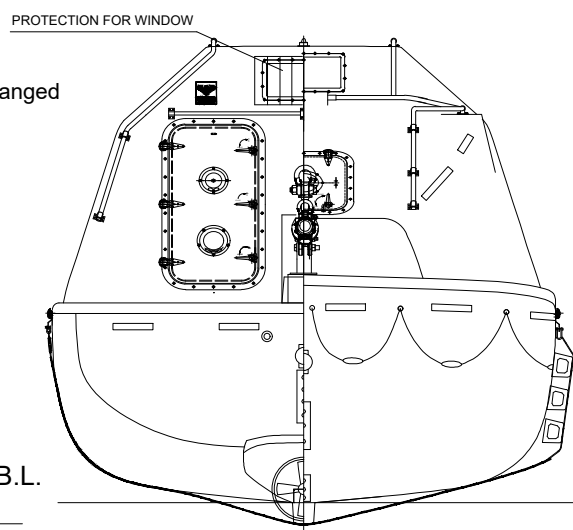
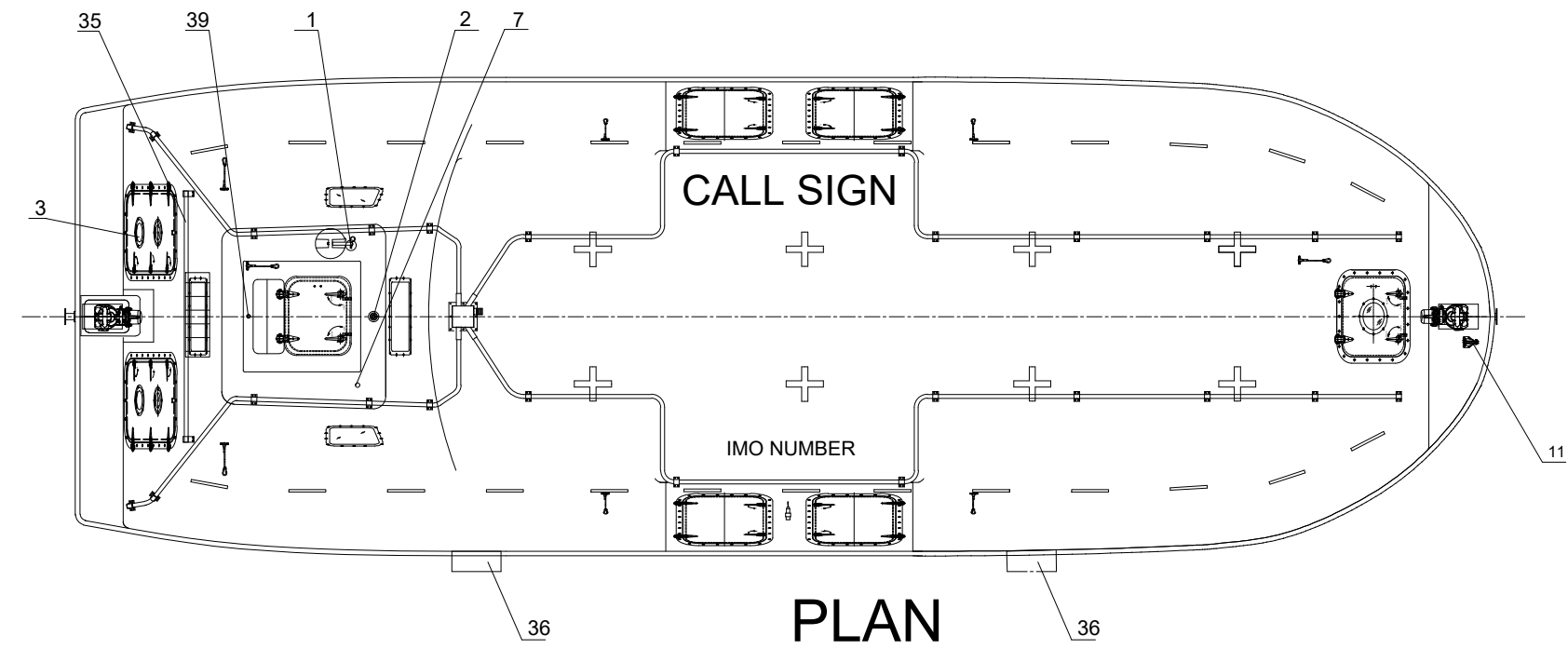


**PROFILE**



**REAR/FRONT VIEW**



**PLAN**

48	HYDRAULIC PUMP OR TANK	1		
47	ACCUMULATOR	2		
46	PILOT CONTROLLED VALVE	1		
45	CONTROL PANEL	1		
44	PLUG FOR BATTERY CHARGING	1	IP67	
43	VENT FOR BATTERIES	1	SS 316 & PVC HOSE	
42	EQUIPMENT SHELF	2	F.R.P.	
41	WATER SENSOR UNIT	1		
40	EMERGENCY RELEASE VALVE	1		
39	RAIN COLLECTION	1	BRASS	
38	SPRINKLE OUTLET/ PIPING	1 LOT	SEA WATER RESISTANT ALUM.	
37	EMERGENCY STEERING HANDLE	1	HOT DIPPED GALVANIZED STEEL	
36	SKATE	2	RUBBER & ALUM. PLATE	
35	RAIL	5	SEA WATER RESISTANT ALUM.	
34	FOOD COMPARTMENT	2	F.R.P.	
33	OAR/CRUTCH	2		
32	WATER COMPARTMENT	2	F.R.P. WATER TIGHT	
31	STEERING GEAR	1		
30	ENGINE & PROPELLER SHAFT	1		
29	STEERING NOZZLE & PROPELLER	1	F.R.P./NiMn-Bronze Cu3-Cu4	
28	BATTERIES	2	70AH	
27	AXE	2		
26	PILLAR	1	F.R.P.	
25	SPRINKLE PUMP	1	90-80CBPJ	
24	DRAIN PLUG	1	BRASS	
23	MANUAL PUMP	1		
22	FIRE EXTINGUISHER	1		
21	FUEL TANK	1	SEA WATER RESISTANT ALUM.	
20	AIR CYLINDER	5/6		
19	SAFETY BELT	1/PERS		
18	EQUIPMENT COMPARTMENT	2		
17	DOOR LATCH	1 LOT	SS316 & PVC SHIELD WIRE ROPE	
16	BACK REST	1	PLYWOOD (18MM THK.x400MM H.)	
15	CONTROL PANEL	1		
14	SEARCH LIGHT	1		
13	INT. LIGHT	2		
12	HELM'S CHAIR	1	F.R.P.	
11	PAINTER HOOK	1	HOT DIPPED GALVANIZED STEEL	
10	GRIPING BOBBIN	2	HOT DIPPED GALVANIZED STEEL	
9	HOOKS DEVICE ARRANGEMENT	2	DIB 125	
8	LIFE LINE	2	PVC SHIELD WIRE ROPE	
7	REMOTE CONTROL LINE HOLE	1		
6	DOOR, WINDOW & HATCH	1 LOT		
5	BOLLARD	1	SS 316	
4	REFLECT LIGHT STRIP	1 LOT		
3	VENTILATOR	4		
2	POSITION LIGHT	1		
1	RADAR REFLECTOR HOLE	1		
NO.	REF.DWG.NO.	DESCRIPTION	QTY.	REMARKS

LENGTH (MOULDED) 11.50m  
 BREADTH (MOULDED) 3.80m  
 DEPTH 1.42m  
 HEIGHT 3.54m  
 HOOK DIST. 10.96m  
 NO. OF PERSON 135P  
 HOOK DIB 125  
 CRAFT WEIGHT 8485.5KG  
 SPEED >6 KNOTS  
 TOTAL WEIGHT 19623KG (82.5Kg/pers)  
 ENGINE N485J-4  
 BUKH BETA 36 EPA  
 SABB L4

Due to manufacturing reasons  
 dimensions may vary up to 50mm  
 Port side shown, Starboard side is  
 Mirrored

2	ADD ENGINE TYPE	KARL	PHLI	THWA	24.10.2019
1	USE NEW TEMPLATE	KARL	PHLI	THWA	19.06.2019
REV	DESCRIPTION	BY	CHECK	APPRO	DATE

REVISION HISTORY



**VIKING NORSAFE**

VIKING Norsafe Life-Saving Equipment Norway AS  
 P.O Box 115 Tel: +47 37 05 85 00  
 4852 Færevik Fax: +47 37 05 85 01  
 NORWAY 24/7 Service: +47 37 05 63 33  
 Email: Viking-Norsafe@viking-life.com

Drawn by	KARL	Check by	PHLI	Appr. by	THWA	Initial release date	16.05.2019
Project number	Standard	Project name		Client number			
Title	EXTERNAL ARRANGEMENT					Material Number	
	DIB 125					Weight	
	JYN-115T					Projection method	
Drawing type	GA	Tolerances	ISO 2768-mK, ISO 13920-BF	Scale	1:30	Sheet Size	A3
Drawing Number	G-503226	Revision	2	Revision		Sheet No.	1/1