

Norsafe SW-50 MkII Free Fall Lifeboat Davit

Technical Data:

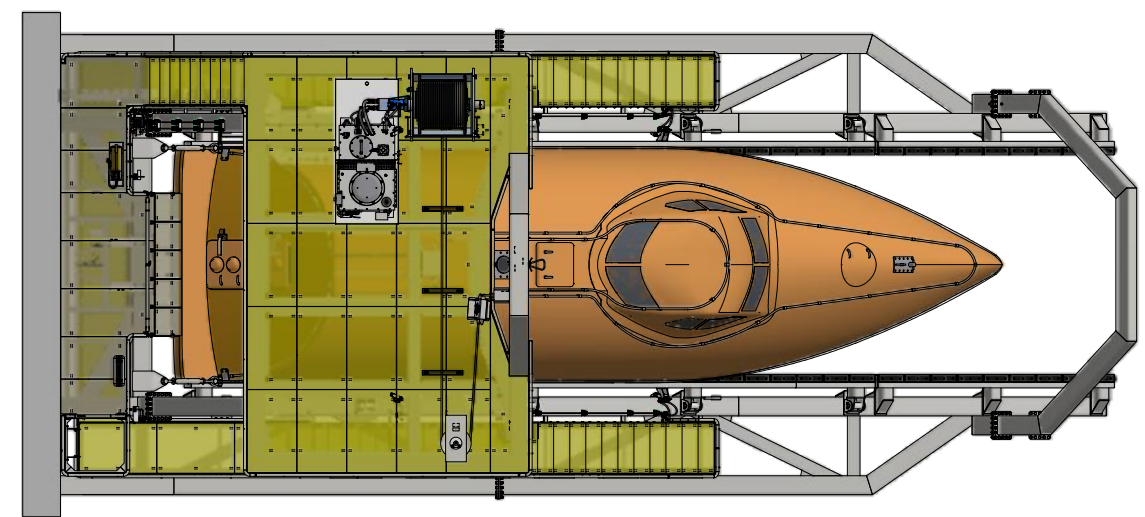
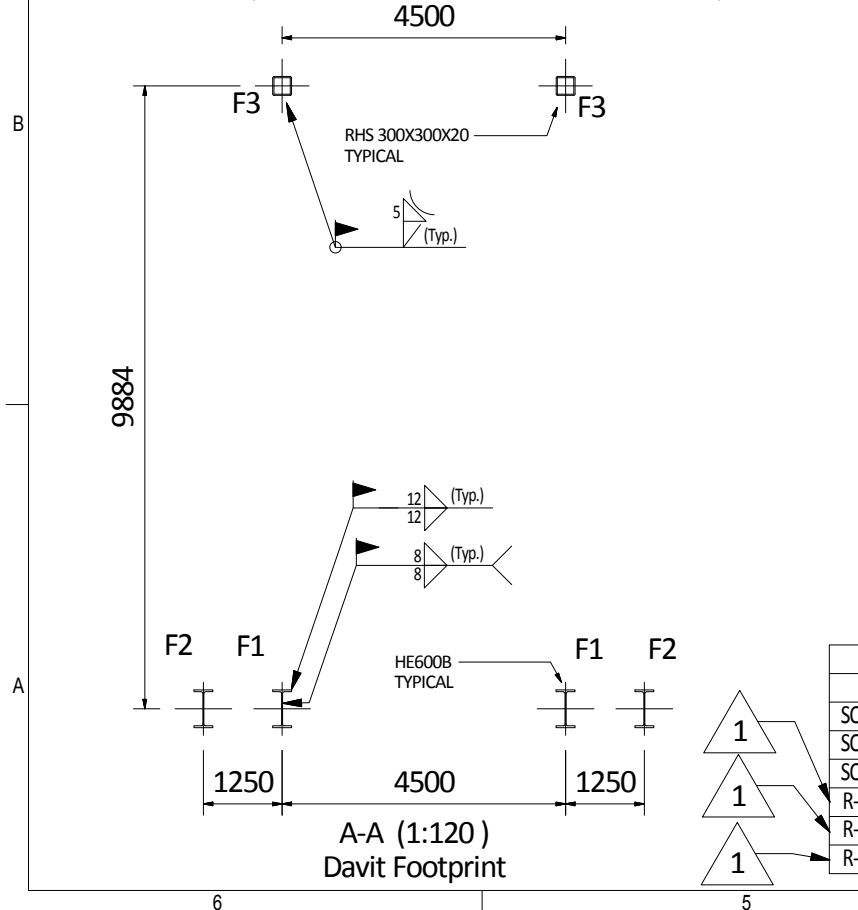
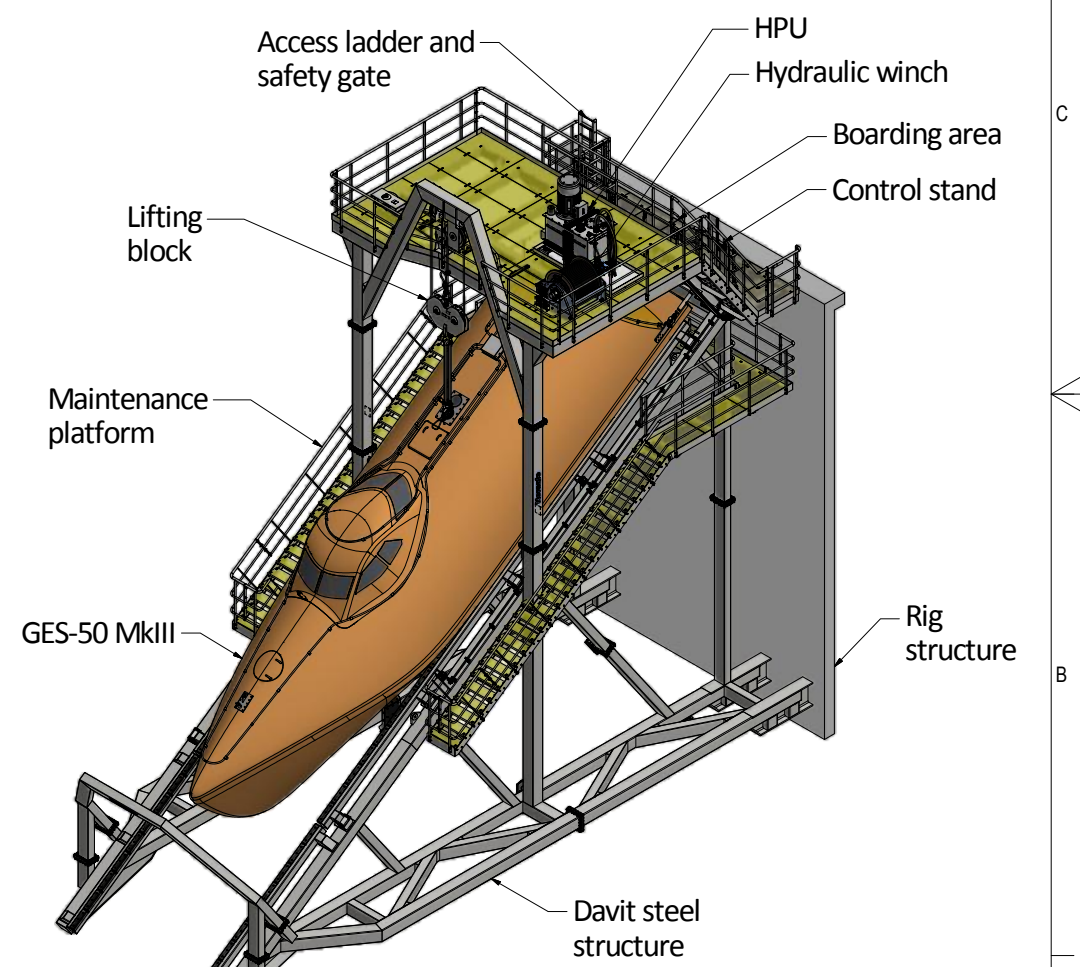
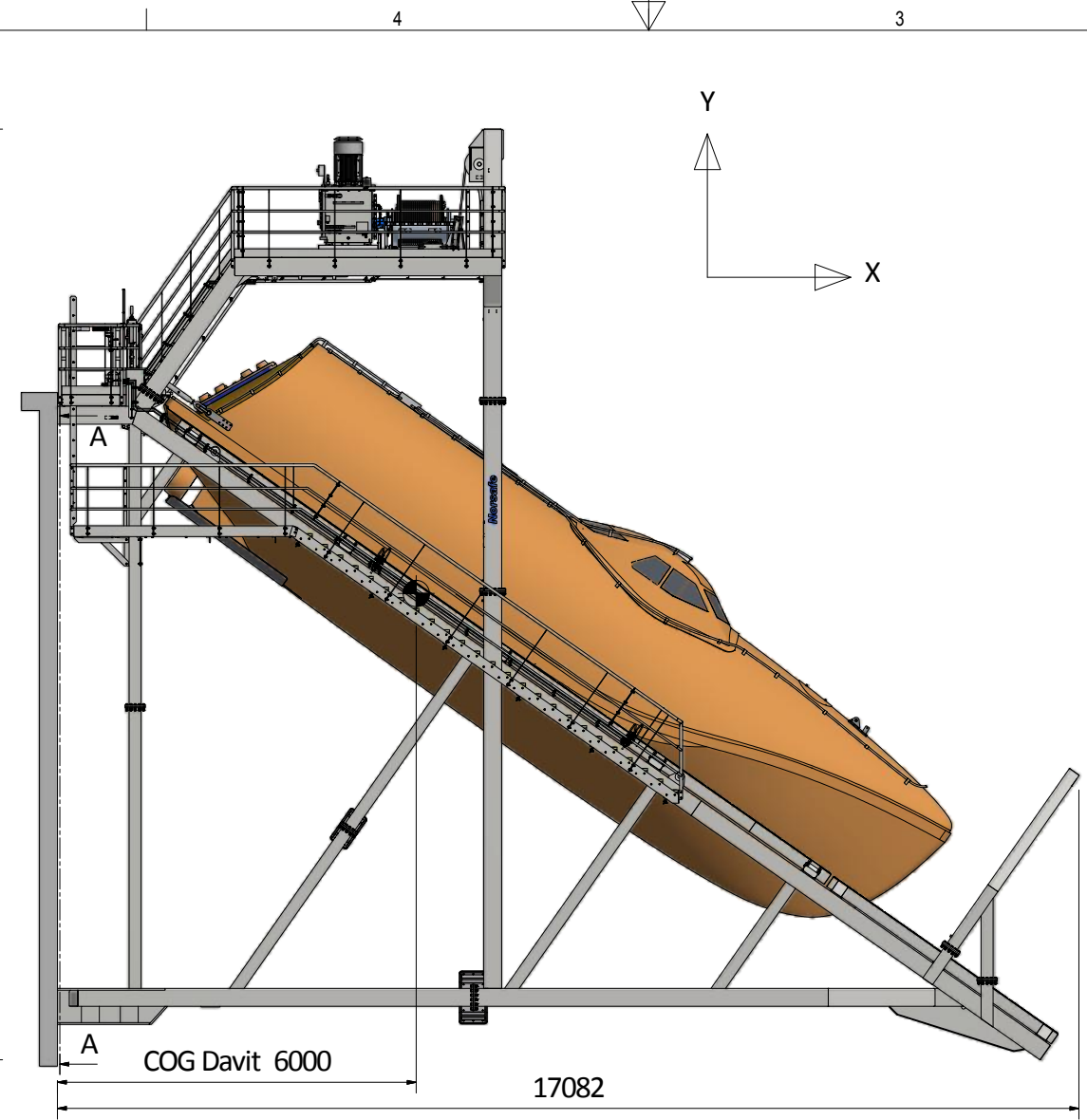
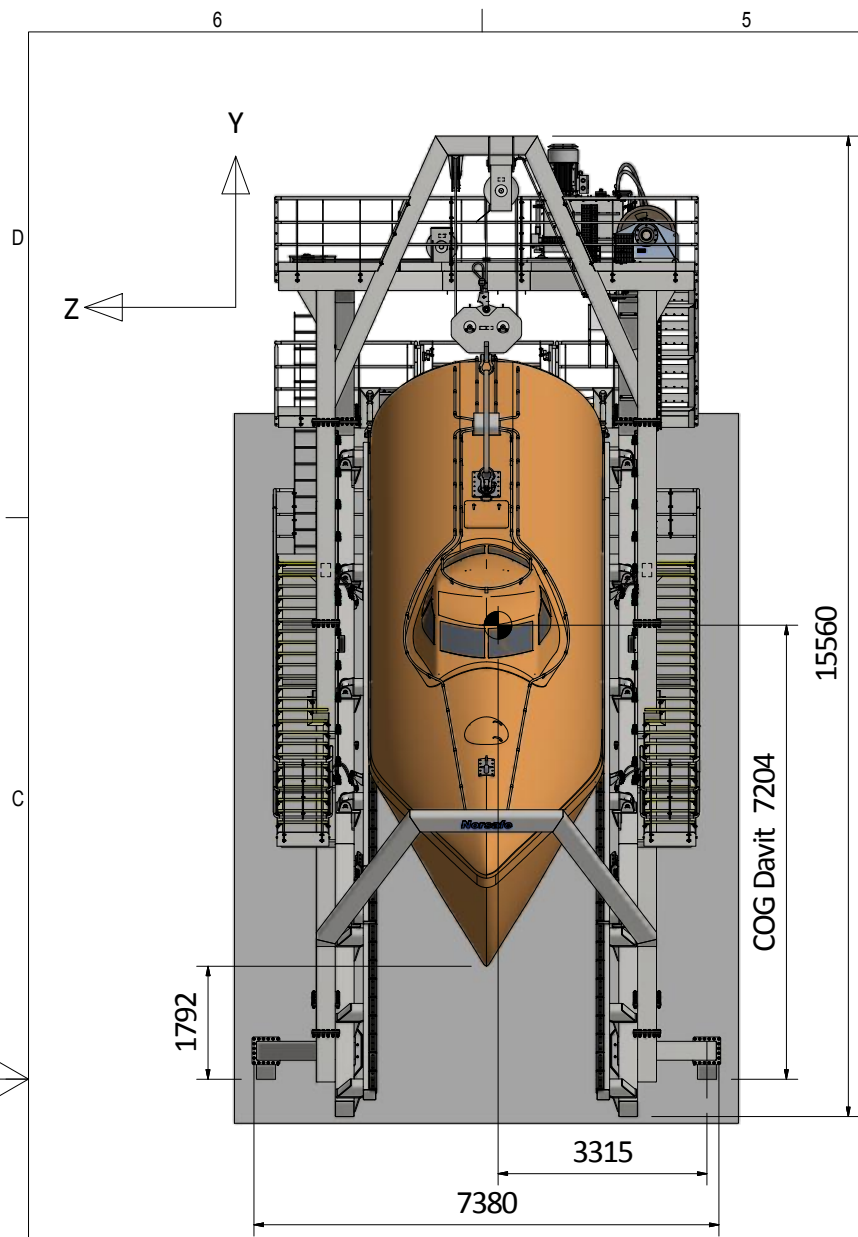
Davit weight approx: 40 000 kg
 Davit Safe Working Load: 26 500 kg
 Lowering: 26 500 Kg
 Hoisting: Empty lifeboat + 3 persons

Max installation height: 47 m
 Measured from lowest point on lifeboat to the sea level.

Reaction Forces:

SOLAS: Unfactored reaction forces.
 R-002: Factored reaction forces. Loadcases according to Norsok R-002.

All reaction forces are nominal point loads and will not occur at the same time. Reaction forces are supported by reaction force reports.



FOOTPRINT / INTERFACE REACTION FORCES AND MOMENTS							
Regulation or Standard	Interface id	Fx (kN)	Fy (kN)	Fz (kN)	Mx (kNm)	My (kNm)	Mz (kNm)
SOLAS list +/- 20 deg trim +/- 10 deg	F1	677	185	58	8	71	367
SOLAS list +/- 20 deg trim +/- 10 deg	F2	958	51	46	12	72	123
SOLAS list +/- 20 deg trim +/- 10 deg	F3	246	116	179	37	61	124
R-002 list +/- 17 deg trim +/- 17 deg	F1	1582	372	126	16	156	791
R-002 list +/- 17 deg trim +/- 17 deg	F2	1860	111	105	22	159	249
R-002 list +/- 17 deg trim +/- 17 deg	F3	506	239	360	61	151	229

1	R-002 reaction forces updated	SHel	KED	IEI	29.06.2017
0	Issued for information	IEI	BOW	VSO	04.05.2016
REV	DESCRIPTION	BY	CHECK	APPRO	DATE

REVISION HISTORY

VIKING NORSAFE

VIKING Norsafe Life-Saving Equipment Norway AS
 P.O. Box 115
 4852 Faerвик
 NORWAY

Tel: +47 37 05 85 00
 Fax: +47 37 05 85 01
 24/7 Service: +47 37 05 63 33
 Email: Viking-Norsafe@viking-life.com

This drawing is the sole property of VIKING Norsafe Life-Saving Equipment Norway AS. It must not be submitted to other parties nor used in any manner detrimental to our interests. It shall not be copied, reproduced, used for manufacturing or sale without the written consent of VIKING Norsafe Life-Saving Equipment Norway AS. All rights are reserved.

DWG SIZE: A3	SCALE: 1:120	COPY OF:	PART NO.:	WEIGHT: N/A	SHEET: 1/1
CLIENT NO.:	PROJECTION METHOD:	SW-50 MKII FREEFALL LIFEBOAT DAVIT WITH GES-50 MKIII GENERAL ARRANGEMENT			
TOLERANCES: ISO 2768-mk, ISO 13920-BF	REVISION: 1				
DWG No.: G-501204	PROJECT:				